



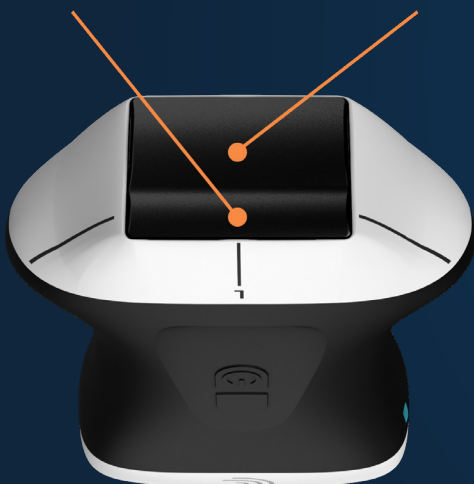
# Clarius PAL HD3

## Phased Array + Linear Array

### Unsurpassed Versatility for Whole-Body Ultrasound

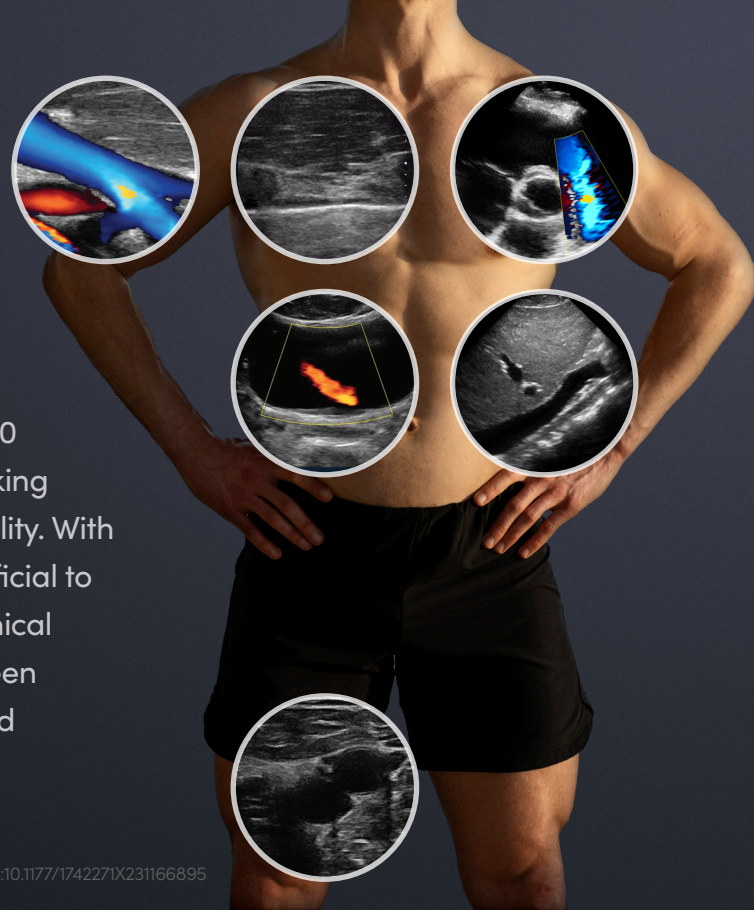
With an innovative wireless dual-array design that combines a phased and linear array on a single head, the Clarius PAL HD3 delivers unsurpassed versatility, superior image quality, and streamlined workflows for whole-body imaging.

Linear Array      Phased Array



# Unsurpassed Versatility

Clarius PAL HD3 stands out by offering the broadest frequency range and greatest depth to 40 cm, making it the ideal handheld for clinicians seeking the ultimate in image quality and diagnostic flexibility. With superior whole-body ultrasound imaging of superficial to deep structures, it supports a wide spectrum of clinical applications<sup>1</sup>. Simply click a button to switch between presets for a seamless transition between deep and shallow lung, cardiac, and vascular imaging.



<sup>1</sup> Park KE, Mehta P, Tran C, Parikh AO, Zhou Q, Zhang-Nunes S. Ultrasound. 2023;0(0). Doi:10.1177/1742271X231166895



\* Clarius Membership Required

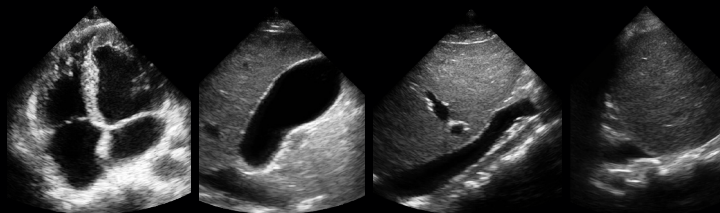
## Specialties

- ✓ Anesthesiology
- ✓ Critical Care
- ✓ Emergency Medicine
- ✓ Internal Medicine
- ✓ Nursing
- ✓ Pain Management
- ✓ Pre-hospital/EMS
- ✓ And More

## Quick Specifications

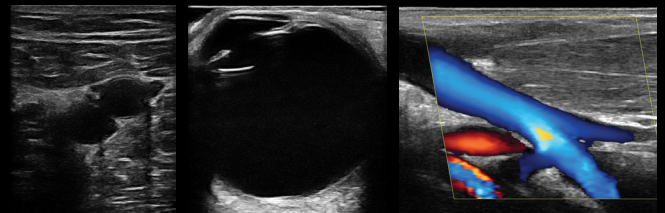
**Phased Depth:** 40 cm      **Connectivity:** Wireless  
**Linear Depth:** 7 cm      **Frequency:** 1-15 MHz  
**Base Modes:** B-Mode, M-Mode, Color Doppler, and Pulsed Wave Doppler\*

## Phased Array



Apical 4 Ch    Gallbladder    IVC    Pleural effusion

## Linear Array



DVT    Ocular    Basilic Vein

# High-Resolution Ultrasound in a Portable Wireless Scanner



## High-Definition

AI, 8 beamformers, and 192 piezoelectric elements deliver high performance and resolution.



## Easy To Use

Friendly app for Apple or Android streamlines workflows with simple swipe, tap, and voice controls.



## Wireless and Ultra-Portable

Steadfast connection. Total freedom. Without cords, cleaning and disinfection are simple and fast.



## Exam Management

Save images to DICOM or securely manage your exams anywhere with unlimited Clarius Cloud storage.



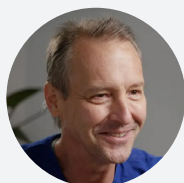
## Dual Array

Our dual-array design enables continuous scanning without changing or flipping scanners.



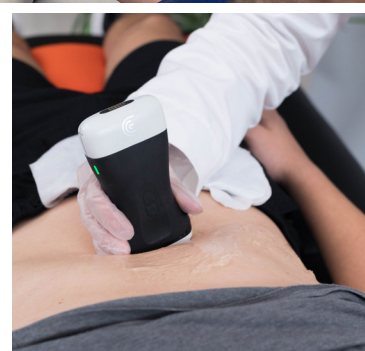
## Whole Body Imaging

Versatile scanner provides superb imaging for the entire body.



The new PAL HD3 scanner is a big breakthrough. Integrating both the phased and linear array means you only have to carry one transducer around for 95 to 99% of the studies at the bedside.”

**Dr. Tom Cook - Emergency Physician**



# Clarius Membership

As a member, you have access to all advanced innovation and services for the ultimate scanning experience and to fast track your mastery of ultrasound. Explore the four pillars of Membership.

## Advanced Features

✓ Voice Controls

✓ Clarius Live Telemedicine

✓ Exam Sharing

✓ Pulsed Wave Doppler

✓ Procedure Recording Mode

✓ Split Screen

## Exam Management

✓ Clarius Cloud

✓ DICOM

✓ Local Image Export

## Clarius Education

✓ 1-Hour Virtual In-Service

✓ Monthly Online Training

✓ In-App Clarius Classroom Videos

## Advanced Specialty Packages

Your Membership offers access to the Advanced Primary/Critical Care, MSK, and Vascular Packages. Streamline your workflows with specialized presets, AI-powered automation, and advanced measurements.

### Package Features:

✓ Auto Presets AI

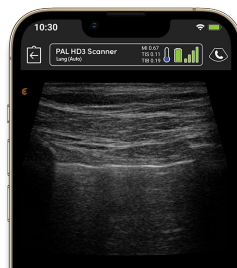
✓ Auto Heart Rate

✓ Elastography

✓ Dedicated Presets

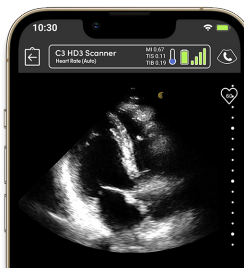
✓ Needle Enhance

✓ Specialty Presets (Venous, Shoulder, Knee, Hip & Thigh, Spine, Pelvic Floor)



### Auto Preset AI

Streamline workflows with automatic anatomy recognition and optimized preset selections.



### Auto Heart Rate

AI automatically calculates the heart rate, without manually making measurements with spectral modes.

### Included with Your Scanner:

✓ 3 Year Warranty

✓ Product Support

✓ 30-Day Risk Free Returns

✓ Charging Station Dock

✓ B-Mode/M-Mode

✓ Color/Power Doppler

[REQUEST A QUOTE](#)

## About Us

Clarius is on a mission to make accurate, easy-to-use, affordable ultrasound available to all medical professionals in every specialty. Our ultra-portable wireless scanners deliver best-in-class imaging with an easy-to-use app for iOS and Android that is powered by artificial intelligence and connected to the cloud. More than four million high-definition scans have been performed using Clarius wireless scanners, now available in over 90 countries worldwide.

### Clarius Mobile Health

2980 Virtual Way #205  
Vancouver, BC, V5M 4X3  
Canada  
hello@clarius.com  
Phone 1-778-800-9975